

Grid visualization software



**GridVis<sup>®</sup>**

GridVis<sup>®</sup> 7.3

Energy management, power quality, ground fault monitoring (RCM):  
visualizing, analyzing, alerting, reporting

# GridVis®

## THREE APPLICATIONS IN A SINGLE SOFTWARE TOOL: ENERGY MANAGEMENT, POWER QUALITY, GROUND FAULT MONITORING (RCM)

GridVis® reveals potential energy savings. In addition, the measured parameters measured can be analyzed to detect possible production stoppages at an early stage and thus to optimize your operating equipment uptime. The scalable, user-friendly software is perfect for building standard-compliant energy, fault monitoring / RCM and power quality monitoring systems.



### ENERGY MANAGEMENT (ENMS)

Certified in accordance with ISO 50001. You are on the safe side with Janitza GridVis® when it comes to topics such as energy management.

### TRANSPARENCY

Keep track of consumption data and costs. Recognize cost generators as well as problems in the power quality. Discover rising fault currents and overloads. Define key performance figures from consumption and measurement data in line with the specifications of ISO 50006.

### NETWORK ANALYSIS & EVALUATION

Analyze and evaluate measurement data. The GridVis® software offers numerous functions, such as statistics, line diagrams, pie charts, heat maps, CBEMA curves, continuous lines, tables, Sankey diagrams, key performance indicators, etc. The functions can be designed intuitively. Measurement data can be analyzed as required by the user.

### SAFETY & ALARM MANAGEMENT

Monitor limit values of measured variables, consumption data, residual currents as well as device communication. Reliable alerting via e-mail and the web interface. With Janitza's GridVis® measurement technology and network visualization software, you give your company more reliability and safety.

### VISUALIZATION & DOCUMENTATION

Web visualization in line with your needs. Quickly and easily create your own dashboards and overview with a large selection of functions and graphics, without programming skills. Benefit from prepared reports and documentation on the topics of energy management, power quality and residual current monitoring.

### OPEN SYSTEM

Regardless of whether it's OPC UA, REST API or CSV, we offer many data import and export options as well as data access options. An open and future-proof system. Third-party devices can be easily integrated via OPC UA or Modbus. No other system offers more connectivity.



- FREE LAYOUT DESIGN
- APPLICATION-ORIENTED FUNCTIONS

- PROFESSIONAL TOOLS FOR EVALUATING ALL MEASUREMENT AND CONSUMPTION DATA

### VISUALIZATION

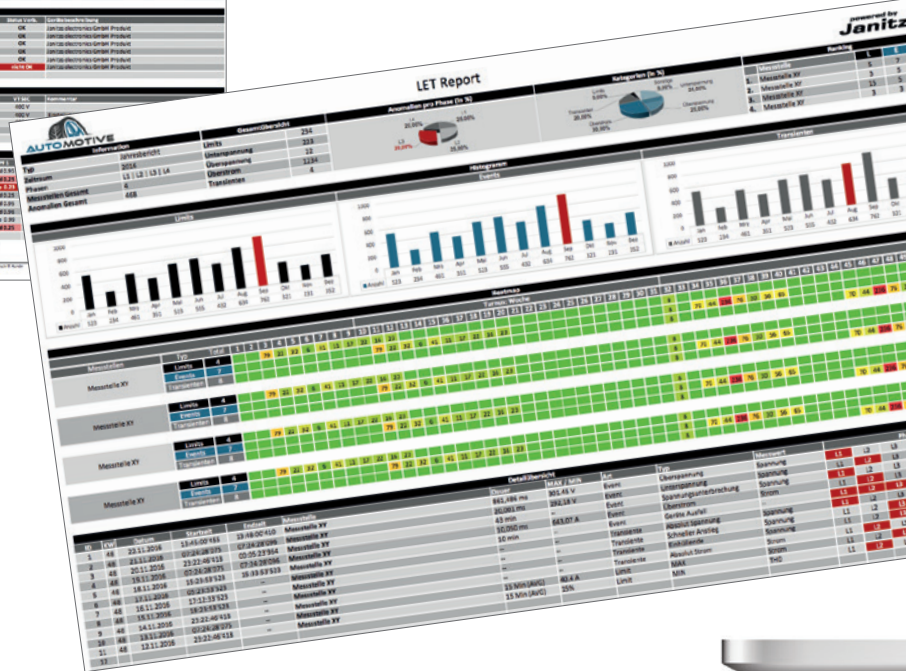
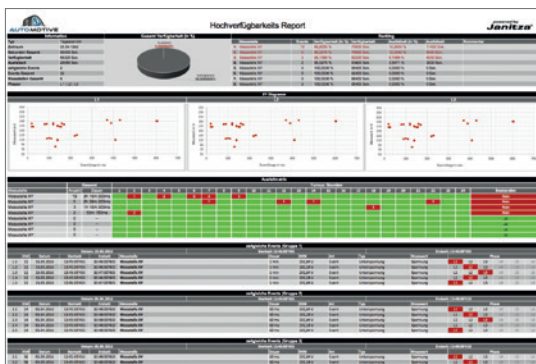
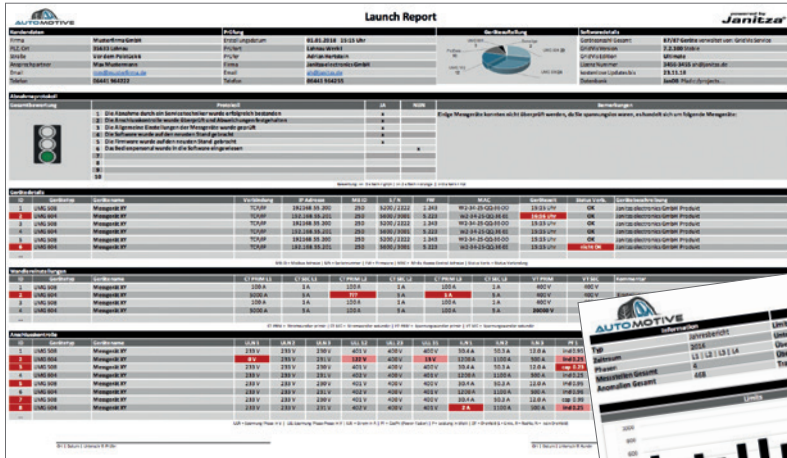
**Design your own overviews with numerous functions and graphics**

- Professional editor for the creation of dashboards
- Dashboards and templates: free design of overviews
- User management and regulation of access rights
- Numerous widgets and functions: line diagrams, bar charts and pie charts, heat maps, Sankey diagrams, key performance indicators (KPI), tables, indicators, continuous lines, weather, live values, links and much more.

### ANALYSIS & EVALUATION

**All details in an overview, with our tools for analyzing and evaluating your measurement data**

- Result and transient browser
- Graph and graph set functions
- Statistical evaluations
- CBEMA curve
- Continuous line
- Dashboards & widgets
- Ground fault monitoring (RCM) analysis



- XLS AND PDF-OUTPUT
- AUTOMATIC E-MAIL SENDING



- FUTURE-PROOF SOLUTIONS
- OPEN SYSTEM
- THE LATEST TECHNOLOGIES

## DOCUMENTATION

### Reports optimized for EnMS, power quality and ground fault monitoring (RCM)

- EN 50160 & EN 61000-2-4 evaluation
- High availability analysis as well as statistical analyses
- Results, transients and limit-value violation
- Energy overviews
- Energy billing
- Residual current analysis
- System acceptance

## CONNECTIVITY

### Data access, data export and import made easy

- OPC UA client and server (optional)
- REST API (M2M solution)
- Modbus third-party devices
- CSV, XLS import & export
- GridVis® Collector (mobile data collector)
- MSCONS (load profile and counter data)
- COMTRADE (transients and events)





- HIGH AVAILABILITY
- RELIABILITY AND SAFETY THROUGH MONITORING
- MEASUREMENT TECHNOLOGY AND MEASURED VALUES UNDER CONTROL



- TIMED TASK MANAGEMENT
- EASY SYSTEM HANDLING THROUGH AUTOMATION FUNCTIONS

## ALERTING

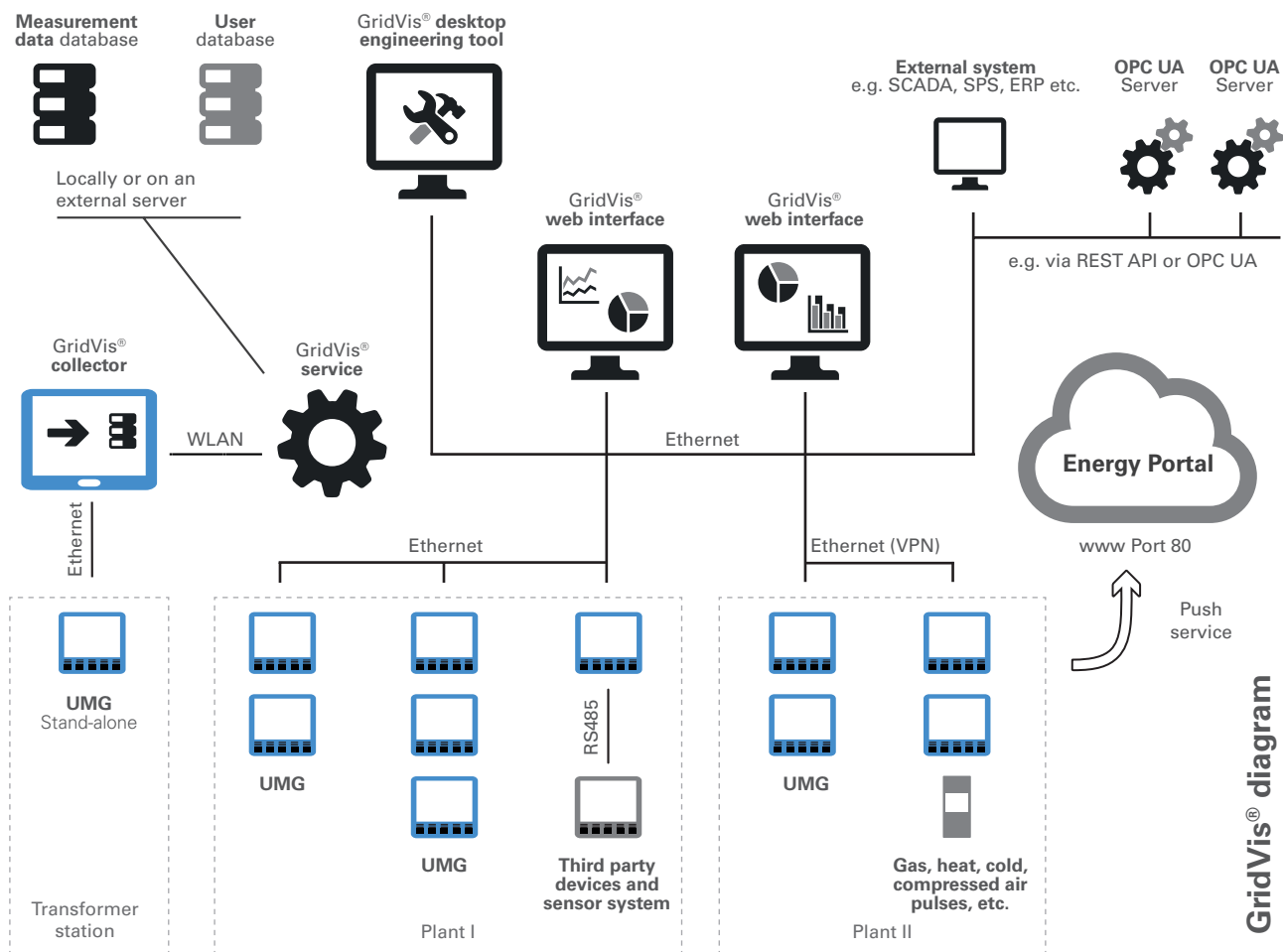
### System and energy monitoring at the highest level

- Monitoring communication, limit values and much more
- Alerting via web UI, e-mail or external program
- Acknowledgement requirement with logging & history
- Escalation levels for needs-based alerting
- Full access to measurement data and communication parameters

## AUTOMATION

### Plan the functions and automate your system

- Planning of device readouts, time synchronization, report creation or e-mail sending
- Automatic data import
- Database management with automation functions
- Shift schedules and rates



## OTHER SYSTEM FUNCTIONS

### WEB INTERFACE

- Dashboards and widgets
- No local installation required

### ENGINEERING TOOL

- Local installation
- Commissioning and parameterization of measuring devices
- Analysis and evaluation

### DATABASE

- Jan DB (database in the scope of delivery)
- MySQL (driver)    ■ MSSQL (driver)

### SERVICE

- Background process
- Operable without registered users

### USER ADMINISTRATION & LANGUAGE

- Password protection and access control
- User management
- German, English, Spanish

### VIRTUAL MEASUREMENT POINTS & LOGIC

- Measurement points without measuring device
- Mathematic operations

### DATA RECORDING & DEVICE CONFIGURATION

- Memory readout
- Online recorder
- Device parameterization

# SERVICES



*Our support engineers as well as a network of professional solution partners offer you a large range of services. From installation or retrofitting, or the complete commissioning of the entire measurement system, to the power quality analysis by certified experts.*

## TRUST IN A STRONG PARTNER

### **Extensive service**

Benefit from custom in-house training workshops and seminars and a diverse range of training courses at our training center in Lahnau. Professional consultation and support services are free for GridVis® customers. We will provide you with on-site assistance during your commissioning and offer fair maintenance contracts to ensure optimal system availability. Customized adjustments to reports are possible.

You can rely on a partner with an extensive product portfolio and many years of experience. As a partner with experience and know-how in numerous industries, we can help you to integrate a perfect solution in your company.



# GridVis<sup>®</sup> – EDITIONS

THE RIGHT PACKAGE OF FUNCTIONS FOR EVERY REQUIREMENT PROFILE

## GridVis<sup>®</sup> – ULTIMATE

51.00.190

### Like GridVis<sup>®</sup>– Service, plus:

- Web interface GridVis<sup>®</sup>-Energy
- Enhanced user administration
- Dashboard and template manager
- Widgets
- Key performance indicator evaluation (KPI)
- Sankey diagram (energy flow analysis)
- Device overview with graph function
- NEW starting with version 7.3: OPC UA Client
- NEW starting with version 7.3: Image and symbol library

## GridVis<sup>®</sup> – SERVICE

51.00.180

### Like GridVis<sup>®</sup>– Professional, plus:

- NEW starting with version 7.3:  
Enhanced reports:
  - High availability
  - LET (Limits, Events, Transients)
  - Energy billing
- NEW starting with version 7.3\*:  
COMTRADE & MSCONS Export
- Service, including REST API
- Online recorder
- Alarm management
- Measurement and consumption data export (CSV)
- Third party devices (generic Modbus)
- Enhanced automation:
  - Reports
  - Database actions
  - E-mail/alerting
  - Cost centers and rate formation

01

GridVis<sup>®</sup>  
Ultimate

02

GridVis<sup>®</sup>  
Service



### GridVis® – PROFESSIONAL

51.00.160

#### Like GridVis®– Basic, plus:

- Unlimited number of devices and data points
- Database driver (MSSQL, MySQL)
- Automation (readout, time setting, etc.)
- Virtual measuring devices and logic
- User administration

### GridVis® – BASIC

51.00.116

#### Free basic version:

- Maximum of five measuring devices
- Graphs and analysis tools
- Database (Jan-DB)
- Reports:
  - NEW starting with version 7.3:
    - Commissioning report
    - Energy and consumption reports
    - PQ reports (EN 50160, EN 61000-2-4 etc.)
    - Fault monitoring /RCM report



# GridVis® 7.3

## RELY ON CONNECTIVITY AND A PROFESSIONAL ALERTING ON THE WEB

With GridVis® 7.3, Janitza has expanded the powerful GridVis® to include many interesting functions. Add-on tools (e.g. the OPC UA server and GridVis® Collector), which are not included in the standard functions package, expand your options for data collection and processing.

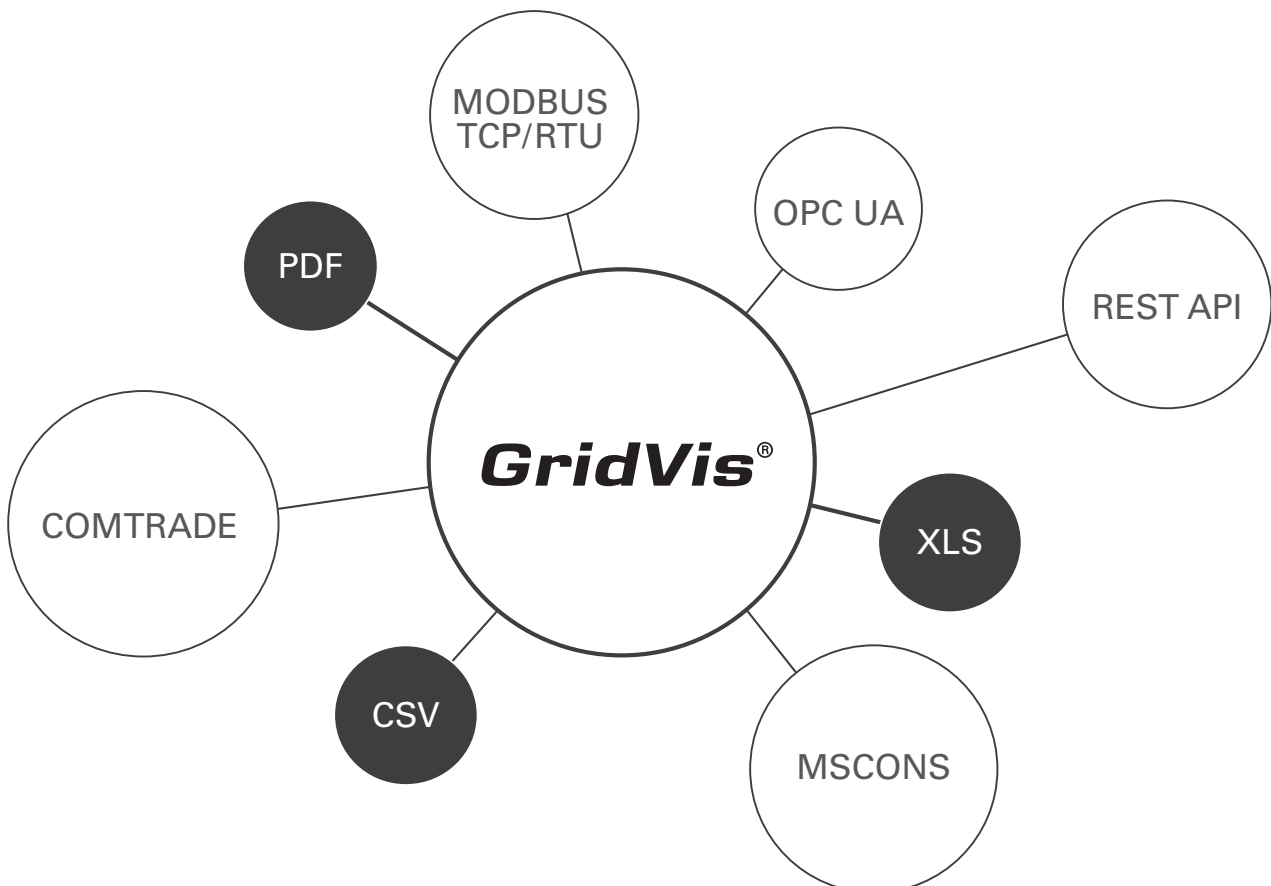
### Expanded functions of GridVis® 7.3:

#### Connectivity

- OPC UA client: fully integrate the OPC UA server in our system, use the values for mathematical operations, key performance indicators or record them with our online recorder.
- COMTRADE export
- MSCONS export

#### Alarm list in the WEB

- User-friendly and intuitive web interface
- Acknowledgment and history on the web
- Search and filter functions





### Enhanced reports

- High availability report – maximum system reliability with statistical evaluation
- LET report – events, transients, limit value violations
- Energy billing calculation – support of price groups, performance values and extra reactive energy, rates
- Commissioning report – acceptance protocol with connection check

### Improved image management

- Pre-installed image and symbol library
- Grouping and search function

### New line diagram

- Simple and intuitive configuration
- Dual time axis mode
- Limit value line
- Continuous line as a function
- Improved layout design

# OPC UA SERVER

## INCREASE YOUR CONNECTIVITY

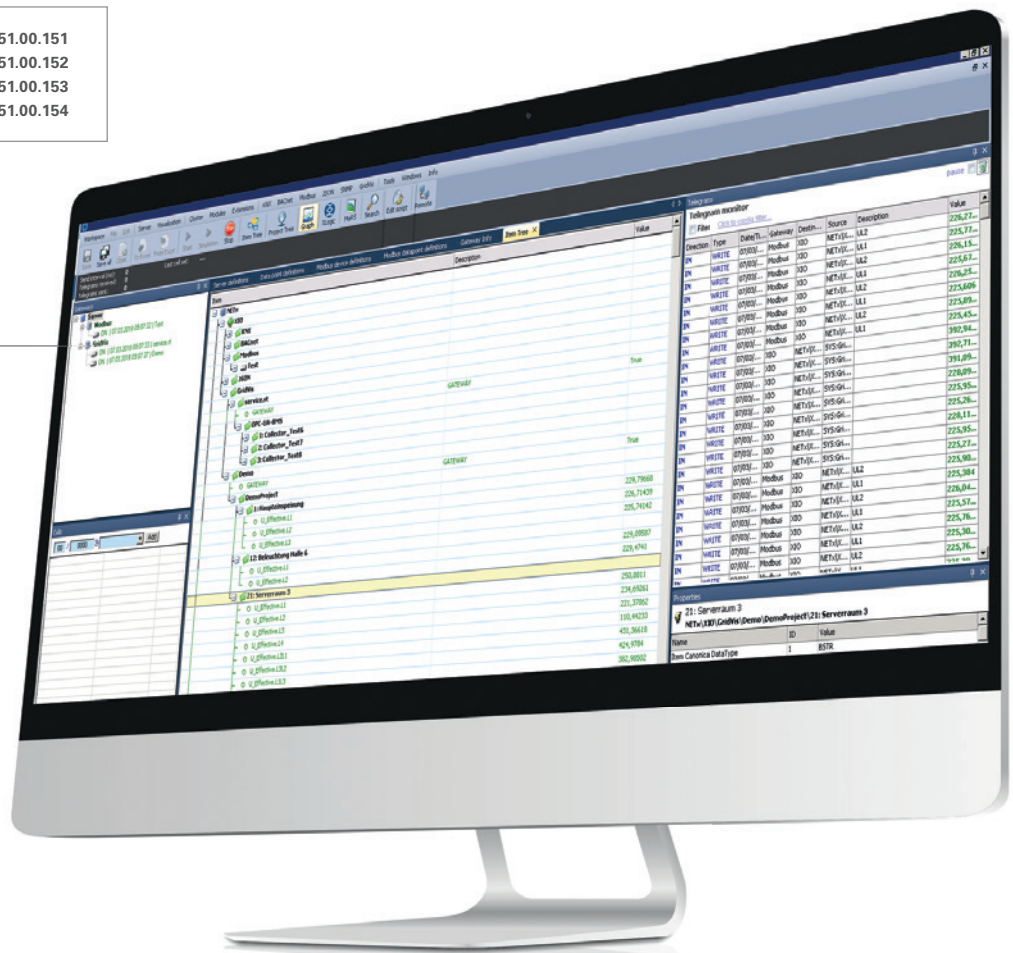
Extend the connectivity of the Janitza software GridVis® with the new OPC UA server from NETxAutomation and take advantage of the possibility to offer measurement data at OPC UA level. The BMS Server from NETxAutomation, with the integrated GridVis® driver, is available exclusively from Janitza and can be used in addition to the OPC UA client (part of GridVis® 7.3, Ultimate edition).

The server enables direct access to measurement data and key performance indicators of GridVis®. The clear advantages of the integrated driver include low setup costs and high availability of all measurement data. In addition, the complete GridVis® measurement device structure is directly available in the OPC UA tree. Several GridVis® projects can also be mounted. OPC UA clients, such as the GridVis®

OPC UA client, building management systems, SCADA systems, ERP systems and many more can thus easily process GridVis® online data. In addition to the direct GridVis® connection, the OPC UA server offers KNX, SNMP and BACnet clients as well as logic functions, which are already included in the scope. Our partner NETxAutomation, provides support with its many years of experience in the field of OPC UA and building automation. Janitza specialists are optimally trained to assist you with the server installation and commissioning.

Note: The OPC UA Server is an independent application and can be acquired in addition to GridVis®. Billing is based on the required data points. We will be happy to make you an individual offer.

- OPC UA Server 250      item no. 51.00.151
- OPC UA Server 1000    item no. 51.00.152
- OPC UA Server 2500    item no. 51.00.153
- OPC UA Server 10000   item no. 51.00.154





# GridVis® COLLECTOR

## MOBILE DATA READOUT

As a mobile unit, the GridVis® Collector makes it possible to read out measurement data from Janitza measurement devices on site without a communication connection. This data can be compared and evaluated in a project with other measurement points. With a battery runtime of up to 9 hours, the GridVis® Collector can manage up to 200 measuring devices. The handling is easy to understand and can be done by a qualified electrician in just a few easy steps.

The synchronization of measurement data with a locally installed GridVis® can be done via Ethernet or WLAN.

The GridVis® Collector offers the ideal solution for collecting measurement data in local network stations or other autonomous electrical distribution systems, which do not have a wireless or network connection.



**GridVis® Collector**  
**Item no. 51.00.400**

The GridVis® Collector is not part of a GridVis® edition and can be purchased as an option.



Janitza electronics GmbH  
Vor dem Polstück 6 | 35633 Lahnau  
Germany

Phone: +49 6441 9642-0  
Fax: +49 6441 9642-30  
info@janitza.de | www.janitza.com

Sales partner

**optec**  
energie ist messbar

Optec AG | Guyer-Zeller-Strasse 14 | CH-8620 Wetzikon ZH

Telefon: +41 44 933 07 70 | Telefax: +41 44 933 07 77  
E-Mail: info@optec.ch | Internet: www.optec.ch

Item no.: 33.03.645 • Doc. no.: 2.500.012.3 • 04/2018 • Subject to technical alterations.  
The latest version of the brochure is available at [www.janitza.com](http://www.janitza.com).