

ACCESSORIES - INTEGRATION AND INSTALLATION AIDS



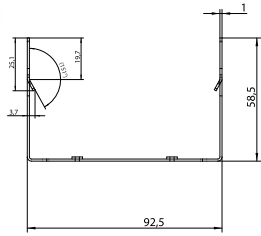
Adapters for DIN rail installation

Description	Type	Item no.
Adapter for DIN rail mounting Dimensions in mm (W x H x D): 85 x 60 x 90	AH96	
UMG 96L / UMG 96		52.09.201
UMG 96-S2 / UMG 96RM / UMG 96RM-M		52.22.666

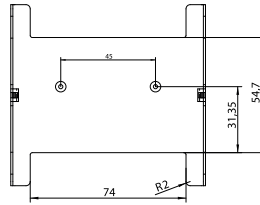


Dimension diagrams

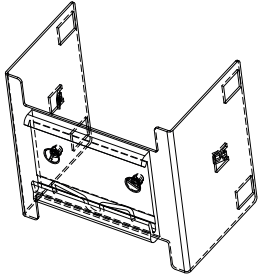
All dimensions in mm



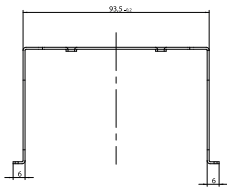
Front view
AH96 for the UMG 96L / UMG 96



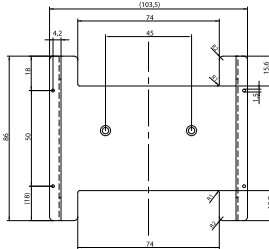
View from below



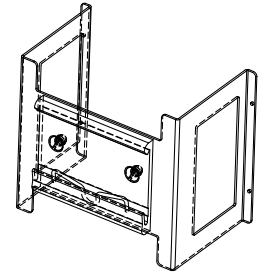
3D view



Front view
AH96 for the UMG 96RM



View from below



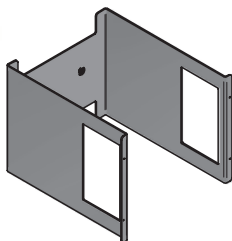
3D view

Description	Type	Item no.
96 mm adapter for DIN rail mounting UMG with Profibus Dimensions in mm (W x H x D): 85 x 113 x 90	AH96P	
UMG 96RM-E / UMG 96RM-EL / UMG 96RM-CBM / UMG 96RM-P / UMG 96RM-PN / UMG 96-PA		52.22.667

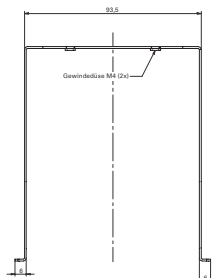


Dimension diagrams

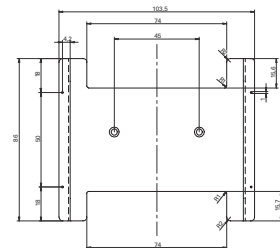
All dimensions in mm



3D view



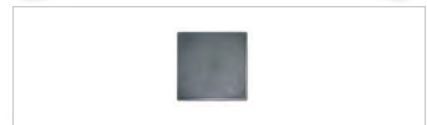
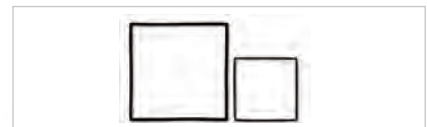
Front view



View from below

Further accessories

Overview		
Description	Type	Item no.
Sealing (to IP54) for UMG 96-S2, UMG 96RM, UMG 96RM-P, UMG 96RM-CBM, UMG 96RM-M, UMG 96RM-E, UMG 96RM-EL, UMG 96RM-PN, UMG 96-PA	D96	29.01.065
Sealing (to IP42) for UMG 96 and UMG 96L	D96	29.01.907
Sealing (to IP42) for UMG 508, UMG 509-PRO, UMG 511, UMG 512-PRO and Prophi®	D144	29.01.903
Blank cover in black plastic, 96 x 96 mm	BA96	29.12.001
Blank cover in black plastic, 144 x 144 mm	BA144	29.12.002
Adapter plate 144 mm to 96 mm, color RAL 7032	AB144/1	29.12.912
Adapter plate 144 mm to 96 mm, color RAL 7035	AB144/2	29.12.913
Ethernet front panel feed-through with extension frame and RJ45 socket type VS-08-BU-RJ45/BU	EFD	13.08.016
Protective cover, flat design for covering the contact insert RJ45	EFDD	13.08.017



optec
energie ist messbar

Optec AG | Guyer-Zeller-Strasse 14 | CH-8820 Vetzikon ZH
Telefon: +41 44 933 07 70 | Telefax: +41 44 933 07 77
E-Mail: info@optec.ch | Internet: www.optec.ch

Janitza®