



PV string Imp measurement.



PV field thermography.



AC current measurement.



AC+DC current recording.



AC voltage measurement.



Switchboard thermography.



AC leakage measurement.



AC+DC current measurement comparison: 3.9A with RMS clamp, 4.7A with TRMS clamp, 6.1A with AC+DC TRMS clamp.

Provided accessories

- **F3000U** Flexible clamp with full scale 30/300/3000A AC
- **4413-2** Couple of red/black 4mm, 90° professional test leads
- **BATMICY** Spare part Li-ION battery 7.4V 1500mAh
- **A0MICY** Adapter multiplug for MERCURY with base charger
- Micro SD card 8GB, 10x
- **B0MICY** Carrying case
- Alkaline battery type AAA IEC LR03, 2pcs
- Type K bead probe + adapter
- User manual
- Calibration certificate ISO9000

The accessories provided may vary according to the country.

Technical Specifications

DC voltage

Measuring range: 0.1mV ÷ 1000V
Resolution: 0.1mV ÷ 1V
Basic accuracy: ±(0.2%reading + 5digits)

AC TRMS, AC+DC TRMS voltage

Measuring range: 1mV ÷ 1000V
Frequency range: 50Hz ÷ 1kHz
Resolution: 1mV ÷ 1V
Basic accuracy AC voltage: ±(0.8%reading + 5digits)
Basic accuracy AC+DC voltage: ±(2.0%reading + 20digits)

AC TRMS current with flexible clamp F3000U

Measuring range: 0.01A ÷ 3000A
Basic resolution: 0.01A ÷ 1A
Frequency range: 50Hz ÷ 1kHz
Accuracy: ±(1.0%reading + 5digits)

DC current

Measuring range: 0.1µA ÷ 10A
Resolution: 0.1µA ÷ 0.01A
Accuracy: ±(1.0%reading + 3digits)

AC, AC+DC current

Measuring range: 0.1µA ÷ 10A
Basic resolution: 0.1µA ÷ 0.01A
Frequency range: 50Hz ÷ 1kHz
Basic accuracy: ±(1.2%reading + 5digits)

Resistance and Continuity test

Measuring range: 0.1Ω ÷ 60MΩ
Resolution: 0.1Ω ÷ 0.01MΩ
Basic accuracy: ±(0.5%reading + 5digits)
Buzzer test: R<50Ω

Frequency (electronic circuits)

Measuring range: 0.01Hz ÷ 10MHz
Resolution: 0.01Hz ÷ 0.01MHz
Basic accuracy: ±(0.09%reading + 5digits)

Frequency (electronic circuits)

Measuring range: 40Hz ÷ 10kHz
Resolution: 0.01Hz ÷ 0.001kHz
Accuracy: ±0.5%reading

Duty Cycle

Measuring range: 0.1% ÷ 99.9%
Resolution: 0.1%
Accuracy: ±(1.2%reading + 2digits)

Diode test

Maximum test current: 1.5mA

Optional accessories

- **HT96U*** Standard clamp with full scale 1/100/1000A AC and Hypertac connector
- **HT97U*** Rigid standard clamp with full scale 10/100/1000A AC and Hypertac connector
- **HT98U*** Standard clamp with full scale 1000A DC and Hypertac connector
- **HT4006** Standard clamp with full scale 40/400A AC/DC and banana connectors
- **NOCANBA** Adapter for clamp connection with Hypertac connector

* Adapter NOCANBA necessary.

Temperature with K-type probe

Measuring range: -40°C ÷ 1000°C / -40°F ÷ 1800°F
Resolution: 0.1°C ÷ 1°C / 0.1°F ÷ 1°F
Accuracy: 1.5%reading + 3°C / 1.5%reading + 5.4°F

Capacitance

Measuring range: 0.01nF ÷ 6000µF
Resolution: 0.01nF ÷ 1µF
Basic accuracy: ±(1.2%reading + 8digits)

Datalogger function

Max number of recordings which can be saved in the internal memory: 16
Selectable sampling interval: 1s ÷ 15min
Max selectable duration of recordings: 1s ÷ 10h

IR camera function

Sensor resolution: 80 x 80pxl
Temperature measuring range: -20°C ÷ 260°C / -4°F ÷ 302°F
Sensitivity: <0.1°C (@ 30°C)
Visual range (FOV): 21° x 21°
Focusing / Lens: automatic / 7mm
Image frequency: 50Hz

General specifications

General characteristics

Instrument safety: IEC/EN61010-1
EMC: IEC/EN 61326-1
Insulation: double insulation
Pollution level: 2
Measurement category: CAT IV 600V, CAT III 1000V
Functions: Data HOLD, MAX/MIN/PEAK, REL., Laser, Bluetooth, LED illuminator
Memory for data saving: micro SD card, BMP format

Mechanical characteristics

Size (L x W x H): 185 x 75 x 55mm
Weight (batteries included): 555g
Mechanical protection: IP65

Power supply

Battery type: 1x7.4V rechargeable Li-ION battery, 2300mAh
Auto power off: 15,30,60min (selectable)

Display

Type of display: 4 dgt LCD, max 6000 dots, decimal sign, point backlight and bargraph, indication of polarity
Updating frequency: 3 times/s
Conversion: TRMS

 **HT ITALIA S.R.L.**

Via della Boaria, 40
48018 Faenza (RA) Italia
Tel. +39 0546 621002
Fax +39 0546 621144
E-mail export@htitalia.it
ht-instruments.com

 **HT INSTRUMENTS AMERICAS LLC**

2804 Patricia Lane
Billings, MT 59102
USA
Tel. 1 719 421 9323
E-mail: sales@htinstruments-us.com
ht-instruments.us

 **HT INSTRUMENTS GMBH**

Am Waldfriedhof, 1b
D-41352 Korschenbroich, Deutschland
USA
Tel. +49 (0)2161 564 581
Fax +49 (0)2161 564 583
E-mail: info@ht-instruments.de
ht-instruments.de



 **HT INSTRUMENTS SL**

C/ Legalitat, 89
08024 Barcelona, España
Tel. +34 93 4081777
Fax +34 93 4083630
E-mail: info@htinstruments.es
ht-instruments.es

MERCURY

TRMS THERMAL MULTIMETER



I am a multimeter...



- › **Data logger function** and **real-time display of graphs** of measured data
- › **DC, AC TRMS, AC+DC TRMS voltage** up to **1000V**
- › **DC, AC TRMS, AC+DC TRMS current** up to **10A**
- › **DC, AC TRMS, AC+DC TRMS current by means of external clamp transducer**
- › Measurement of **frequency** and **duty cycle**
- › **Resistance** and buzzer for **continuity test**
- › Measurement of **capacitance**
- › **Diode test**
- › **Temperature** measurement by means of external K-type probe
- › **MAX/MIN/PEAK/HOLD/REL** functions
- › **Selectable sampling rate:** from 1s to 15min
- › Built-in white-light torch
- › TFT high-contrast colour display (320x240pxl)
- › **6000 measuring spots**
- › Measured **data saving** on micro SD card
- › **IP65 protection (dust-tight and washdown protection)**
- › Auto power OFF

optec
energie ist messbar

Optec AG | Guyer-Zeller-Strasse 14 | CH-8620 Wetzikon ZH

Telefon: +41 44 933 07 70 | Telefax: +41 44 933 07 77
E-Mail: info@optec.ch | Internet: www.optec.ch

Why choose Mercury?

- › As a **single device**, I carry out all measurements normally performed with **multimeters and IR cameras**.
- › My **built-in IR camera** allows me to simply and quickly detect hot spots caused by **electrical problems or malfunctions**. Once repair works are completed, I can check whether the problem was solved or not
- › My **multimeter function** allows me to **troubleshoot installations**, measuring voltage and current.
- › I log to my **internal memory** the trend of **voltage and current** with **selectable sampling rate**.
- › I **save** and download onto the PC **IR images, measures and data recordings** to generate professional reports.
- › I connect **Bluetooth** to mobile devices. In this way, the operator can set the instrument on the measuring spot, move away from a possible dangerous area and read measures on the tablet/smartphone through the App HT MERCURY.
- › **CAT IV 600V/CAT III 1000V** allows me to be used in **industrial and domestic applications**.
- › I can be connected to a wide range of (rigid and flexible) clamp transducers for measuring **AC TRMS, DC, AC+DC current**.
- › I can be connected to a wide range of external K-type probes to measure **temperature**.
- › Thanks to my **colour display**, detecting possible problems through a thermographic image will be very easy and quick.
- › The two rechargeable **Li-ION batteries** provided allow for a **long continuous working duration**.
- › I am **portable, compact and resistant**. I am dust-tight and protected against water jets (**IP65**).



PV string Voc measurement



PV string Vmp measurement



ISO 9000
CALIBRATION
CERTIFICATE
INCLUDED



...with a thermal soul!



I see what others can't see. IR range from -20°C to 260°C.

- › My TFT 320x240 pixel **colour graphic display** allows an optimum display of images.
- › I am provided with an infrared sensor with **80x80 pixel resolution** and **0,1°C sensitivity**, which allows me - from a safe distance - to precisely pick the spot where a problem is present, displaying and highlighting possible anomalous temperature values due to electric or mechanical malfunctions (high-voltage devices, transformers, motors, bearings, terminals, connectors, fuses, insulating devices and switches, etc.).



Photovoltaic installations? I see anything. Reliable current and voltage measurements.

In a photovoltaic string, I can measure **voltage and current (fully safely)** thanks to my clamp transducer, immediately detecting any problem in the system. I measure:

- › Open-circuit string voltage (**Voc**)*;
- › String operating voltage (**Vmpp**)*;
- › The current provided by the string in operating conditions (**I_{mp}**), allowing the operator to check that, from string to string, readings do not differ by more than 5%;
- › The status of filter capacitors found in the inverter (one of the most critical elements);
- › The status of locking and by-pass diodes;
- › I **thermographically analyze** photovoltaic modules in order to search for the presence of **overheated modules or cells**.



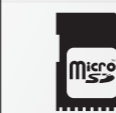
Measuring current*? Couldn't be any easier! Accurate DC/AC and AC+DC TRMS current measurements.

- › I measure current even **without breaking the circuit** to serially connect the multimeter.
- › By using AC/DC transducers, I can measure currents in **TRMS AC+DC** mode and also provide values only from DC and AC components.
- › The measuring range virtually becomes unlimited: from mA to kA. The sensitivity/full range is only determined by the type of transducer connected.
- › The current transducer is connected to the same inputs used for measuring voltage (protected even if no fuses are used), thus **protecting the instrument from any possible wrong connection**.
- › The transducer may also be placed in very **uncomfortable positions** and then be connected, through its long connection cable, to the instrument for a **comfortable reading** of the value of current on the display.



I sure can keep a distance. Bluetooth connection with mobile devices.

- › I am able to **connect Bluetooth** to any tablet and smartphone through the App HT MERCURY.
- › I am provided with a **micro SD card** to save measures and thermographic images.
- › The App HT MERCURY displays in real time and saves the recordings onto tablets and smartphones (snapshots).
- › I create, save and record reports with thermographic images through the App HT MERCURY in order to professionally validate the operator's job.



An excellent memory. Data saving onto micro SD card.

- › I am a **data logger** saving and displaying **graphs and recordings** in the **internal memory**.

* Through external transducer.

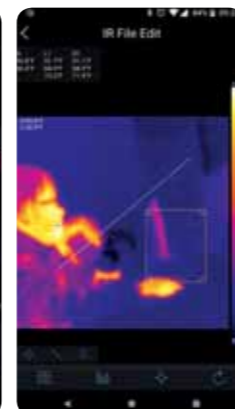


App HTMercury

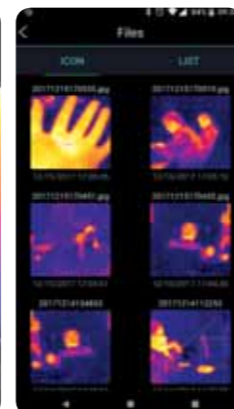
With **HTMercury APP** you can connect through **Bluetooth** to the **MERCURY** instrument in order to **save Multimeter and IR image snapshots, perform recordings, advanced analysis and create and share PDF reports**.



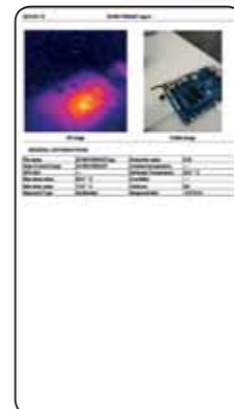
Function Data Logger



Advanced analysis



Images gallery



Report creation